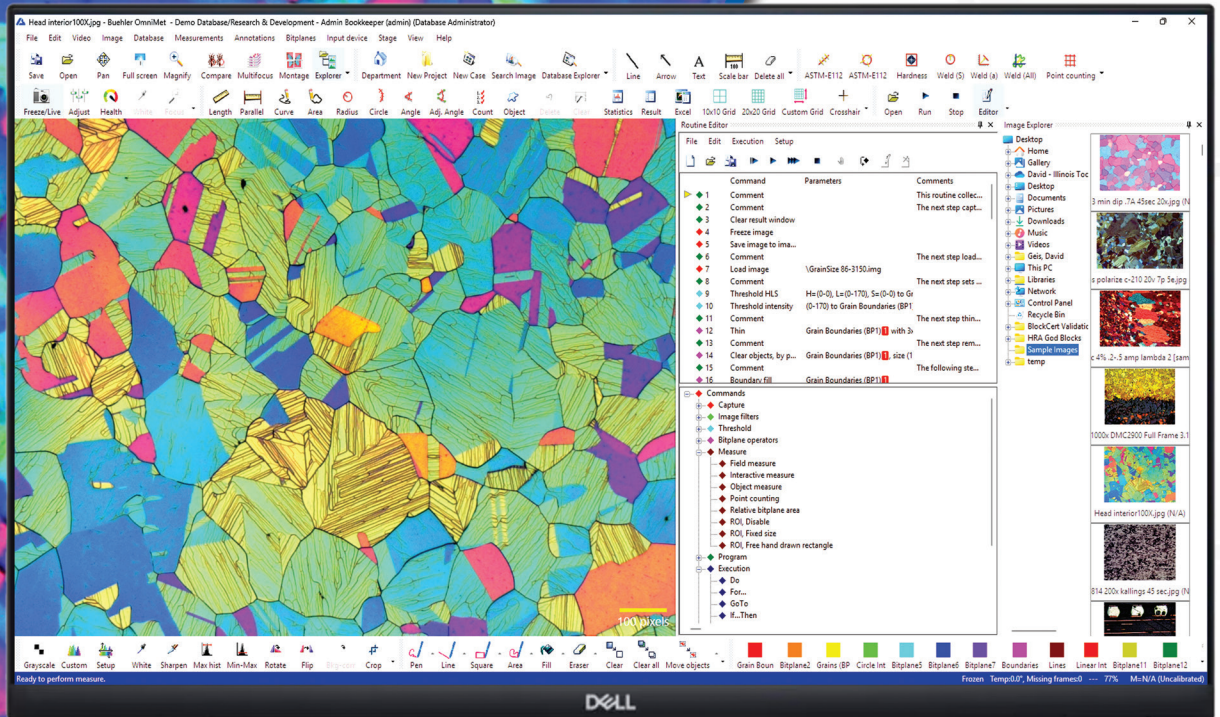


OmniMet®

Modular Imaging System

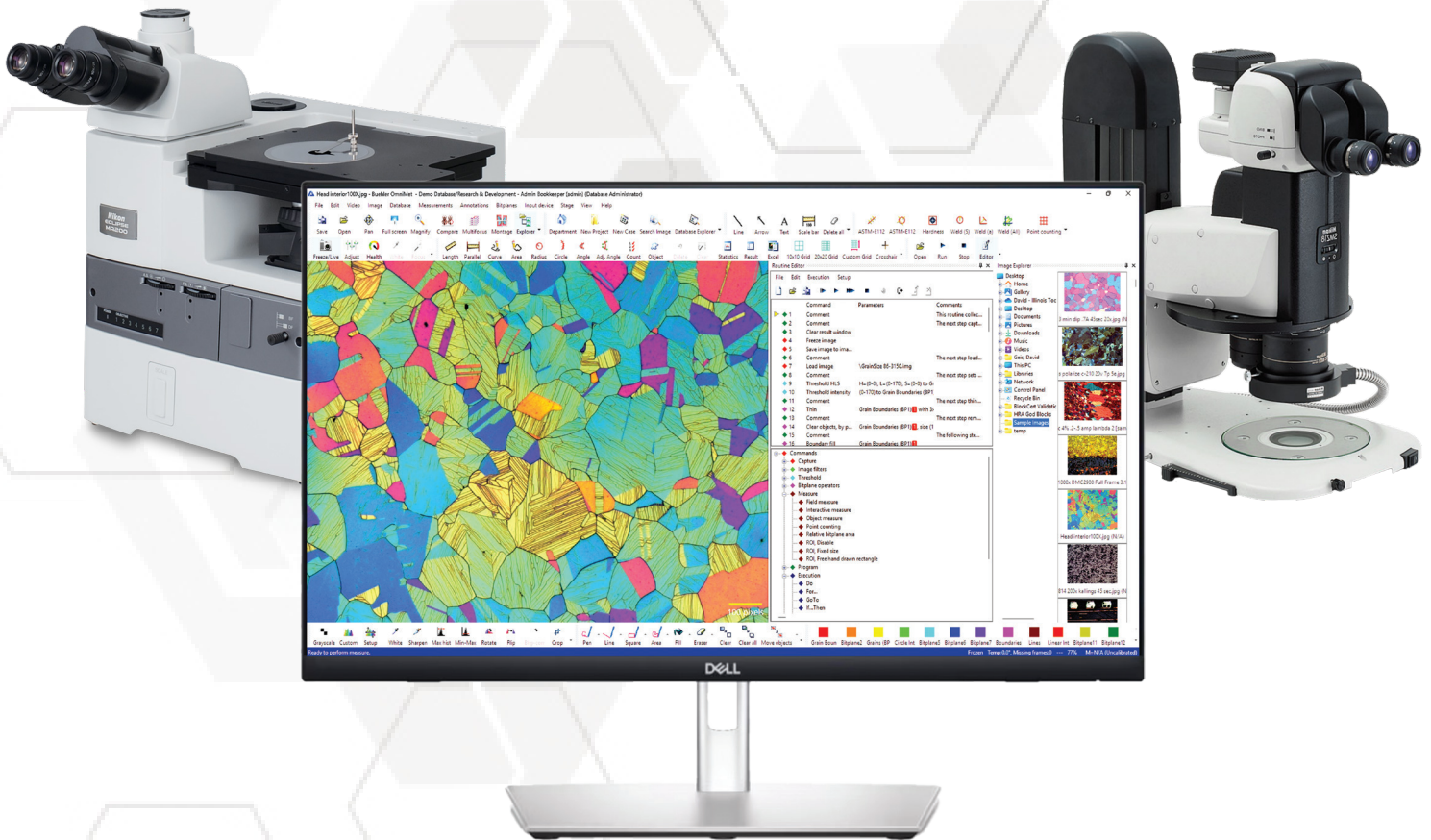


Solutions for Image Capture & Analysis

OmniMet® Modular Imaging System

OmniMet delivers powerful image analysis possibilities combined with flexible database functionality. Customize OmniMet with intuitive user friendly point-and-click measurement possibilities, pre-programmed analysis Scripts, or with capabilities for running user programmable analysis Scripts. The database utilizes a multi-tiered approach to logically organize numerous users and image data with unprecedented ease.

The OmniMet system offers seamless point-and-click integration of microscopes, cameras, and image analysis software via an intuitive interface. In general any standard format image may be viewed directly from a calibrated microscope or be imported into OmniMet for analysis. OmniMet software is offered at different levels of flexibility, functionality, and analytical power to meet the metrology needs of every laboratory requiring image data archiving and quantitative image analysis.



Point-and-click Measurements

- Make simple to complex measurements with intuitive menu options
- Reduce steps with application specific Modules and Scripts
- Comply to national standards with the click of a button

Automated Imaging Analysis

- Create or run pre-programmed Scripts to eliminate repetitive steps
- Improve quality control by following the same process each time
- Export data to Word or Excel automatically[†]
[†] MS Office not included, separate purchase required.

Flexible Modular System

- Choose from a variety of Modules and Scripts to customize according to application
- Choose level of automation with six different Editions
- Upgrade functionality from one Edition to another at any time

Seamless Integration

- Connect to a multitude of cameras, microscopes, and motorized stages
- Calibrate captured images to equipment magnification
- Purchase as a system for a turnkey solution



Capture

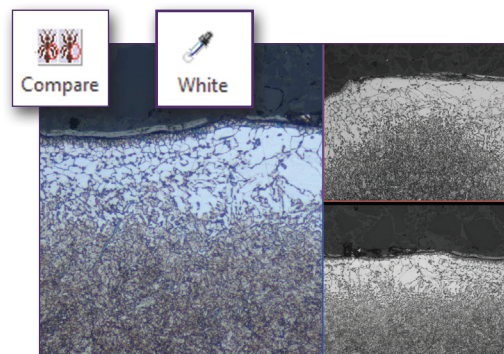
Image Capture

OmniMet seamlessly interfaces with cameras, microscopes and motorized stage controllers to capture, analyze and store images. Calibrate images to microscope settings to burn in scale bars and other annotations. A variety of image manipulation and camera tools may be applied to refine and sharpen the image for analysis.

See the Buehler Product Catalogue for a full listing of cameras and microscopes.

The following are included in OmniMet Capture N' Measure Edition and higher:

- Load and save images
- Brightness and Auto-White Balance
- Digital Zoom, Rotate, Calibrate and Annotate



With image capture, two or more images may be opened side by side and inspected visually

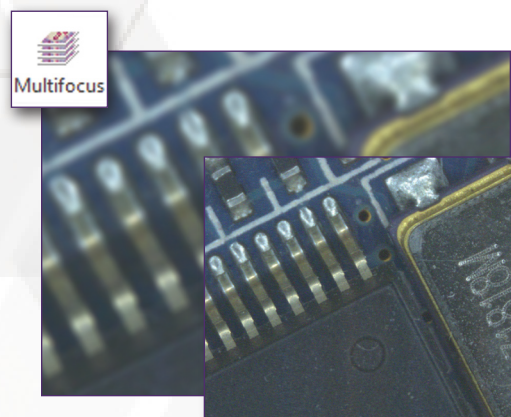
Capture Modules

Multi-Focal Imaging (optional module 86-4130)

A multi-focal image of a circuit board is shown. In this case, due to the non-flat nature of the surface, the image needs to be focused in multiple planes to create a multi-focal image suitable for subsequent analysis and reporting.

This module is ideal for applications including:

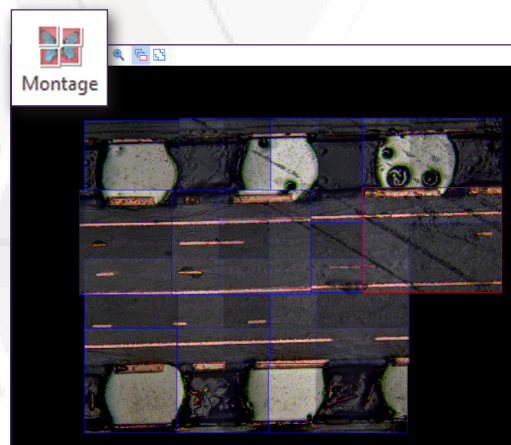
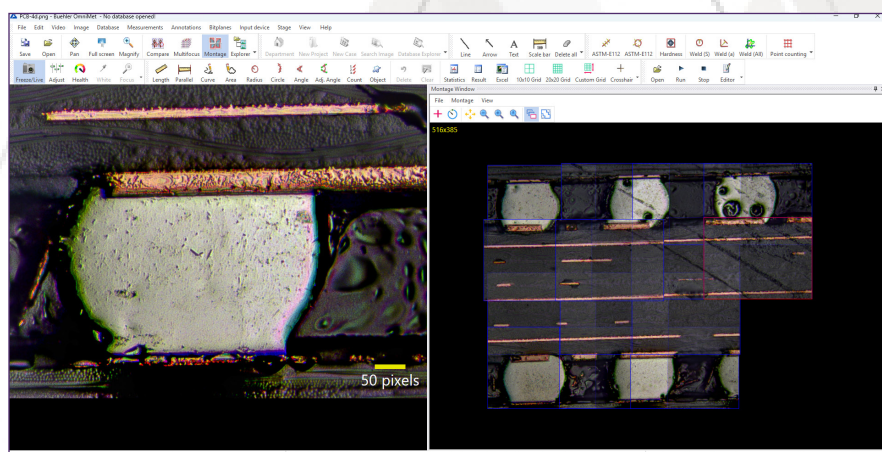
- Electronics
- Fasteners
- Uneven surfaces
- Metallic foams
- Ceramic Composite Matrix (CMC's)
- Coatings



Montage Image Stitching (optional module 86-4140)

Larger images may be easily stitched together using the Montage application. If the single view images are calibrated then the larger stitched image will also be calibrated and suitable for quantitative image analysis.

- Drag and drop images onto the Montage window
- Montage assists with image alignment for a seamless composite image



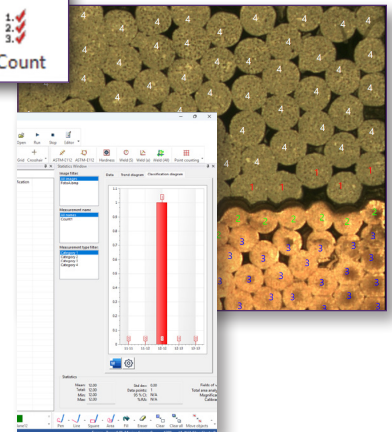
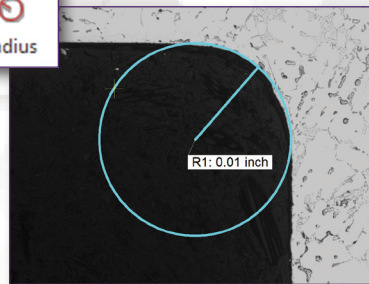
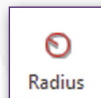
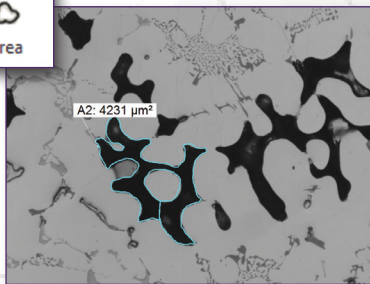
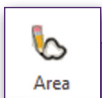
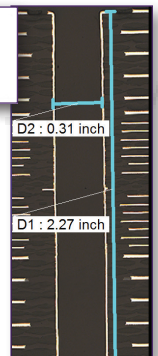
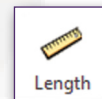
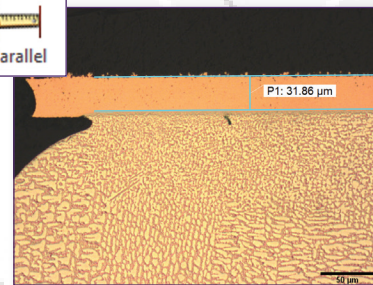
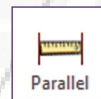
Measure

Standard Measurement Modules

Analyze images with interactive point-and-click measurement modules. Intuitive buttons allow for quick measurements. Burn in results directly onto the image.

The following are included in OmniMet® Capture N' Measure Edition and higher:

- Length
- Radius
- Angle
- Parallel Lines
- Curve (freehand)
- Count Objects
- Area & Perimeter

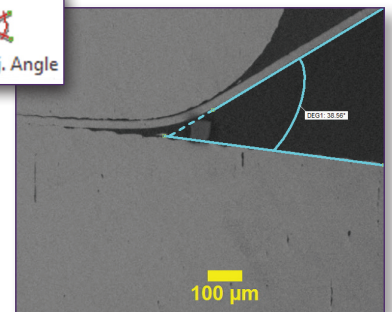
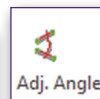
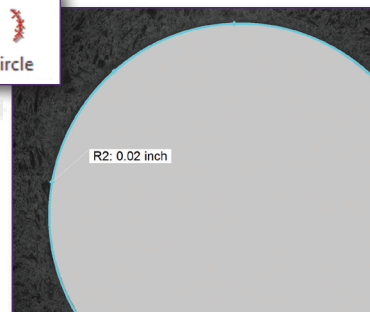
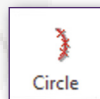


Advanced Measurement Modules

Perform analysis with increased versatility with Advanced Measurement Modules.

The following are included in OmniMet Advanced Edition and higher:

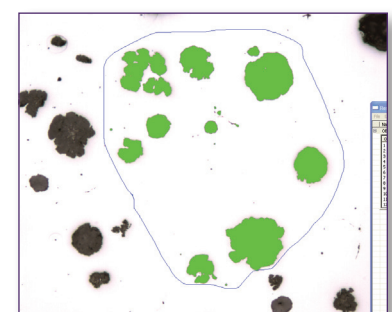
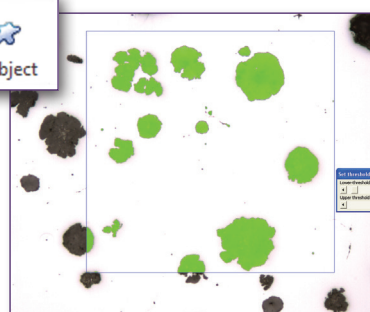
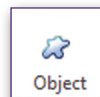
- Fixed Parallel Lines
- Polygon
- Circle - 3-point
- Adjustable Angle



Object Analysis (optional module 86-4110)

Measure objects by applying a threshold within a specified region of interest: entire image, rectangle, or freehand ROI.

Show results by area fraction, area position, number of objects, perimeter, compactness, length, feret diameter, center of gravity, inclusion, and exclusion of objects by size.



Measure

Advanced Measurement Modules (cont'd)

Grain Size (optional module 86-4125)

Grain sizes may be easily estimated according to ASTM E112 using linear and circular intercept techniques:

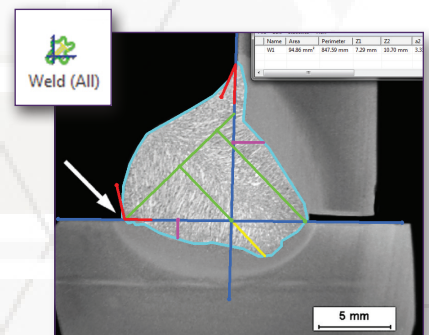
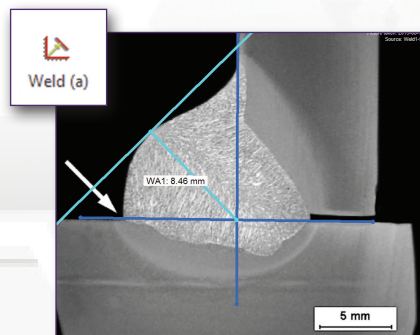
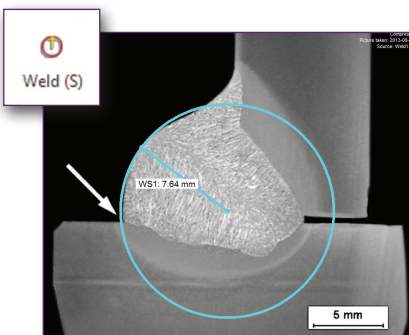
- Linear intercept method is recommended for uniform grain sizes
- Circle intercept method is recommended for measurement of non-symmetrical grain sizes



Weld (optional module 86-4115)

Sectioned welds may be characterized using multiple tools to evaluate depth, penetration, and extent of heat-affected zones.

- Use Weld (S) to determine effective weld depth by measuring the radius
- Use Weld (a) to measure angular A-measurements
- Use full weld outline, Weld (All), to determine effective depth penetration and area



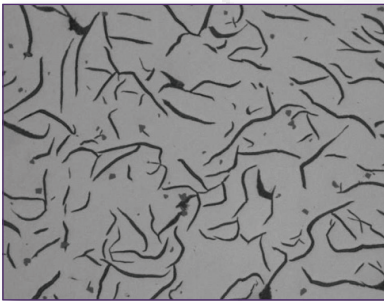
Measure

Application Specific Scripts

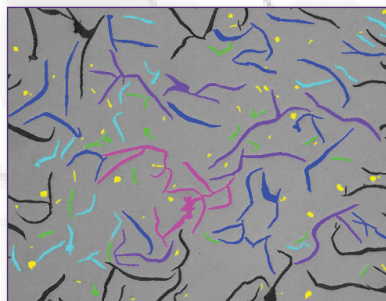
Automate analysis using pre-programmed, application specific Scripts. A variety of image filters, thresholding, and measurements are performed on the image with the click of a button. Statistics and results are shown and can be easily exported to Microsoft® Excel® or Microsoft Word®. Popular applications and associated routines are shown below. Easily follow industry standards such as ASTM E112 Grain Size or ASTM E1245 Inclusion Rating.

Available with OmniMet® Express and OmniMet Enterprise Editions. See page 12 for a full listing of available application specific scripts. (MS Office not included, separate purchase required.)

Cast Iron (optional Script 86-3400)



As polished, grey iron specimen.

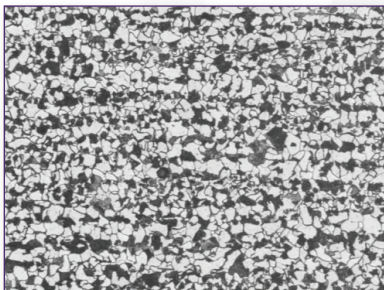


Individual flakes have been color-coded based on string length.

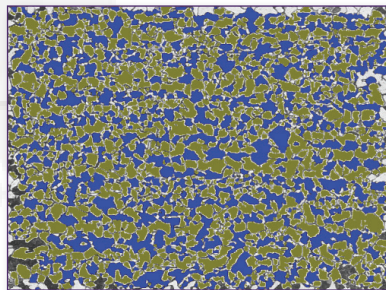


Relative area-fraction of the eight ASTM A247 graphite size classes.

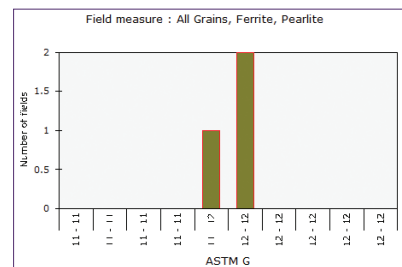
Grain Size (optional Script 86-3100)



Microstructure of a two phase material.

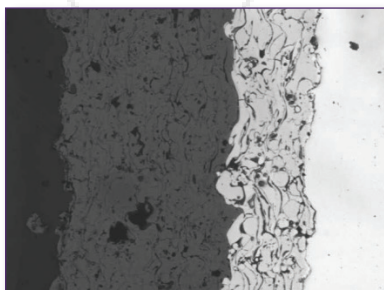


The grains were sorted into two categories with thresholding.

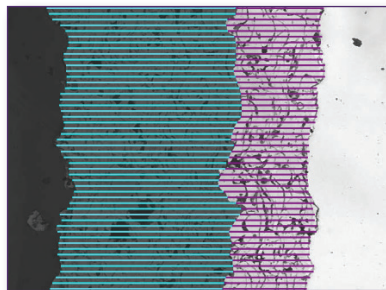


The graph shows the average grain size for each phase.

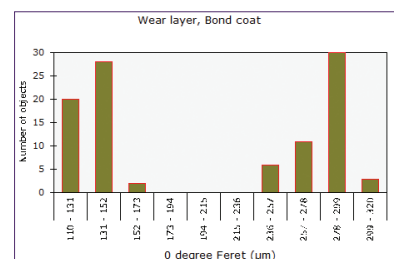
Coating Layer (optional Script 86-3300)



A thermal spray coating is shown with a wear layer and a bond coat.



The thickness of each layer is measured across the micrograph.



The wear layer and bond coat thicknesses are shown.



ScriptEditor for Full Flexibility

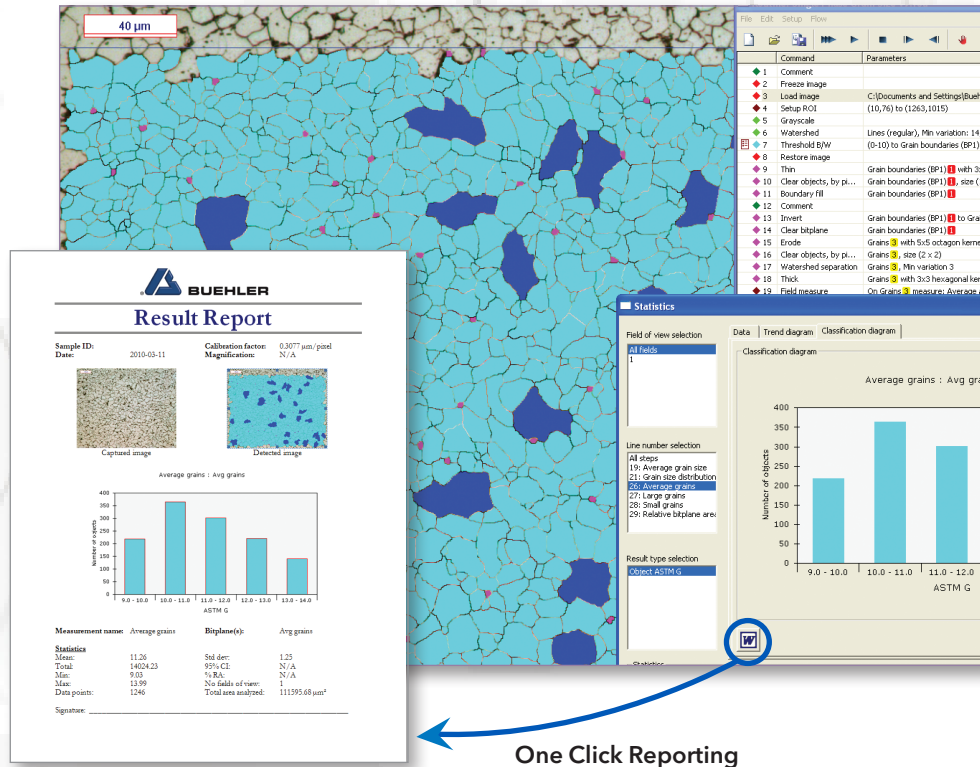
Available with OmniMet® Enterprise Edition.



Report

Generate statistical information, annotate images, and send data directly to Microsoft Word or Excel †. Standard Word and Excel templates are pre-loaded with any OmniMet® Edition.

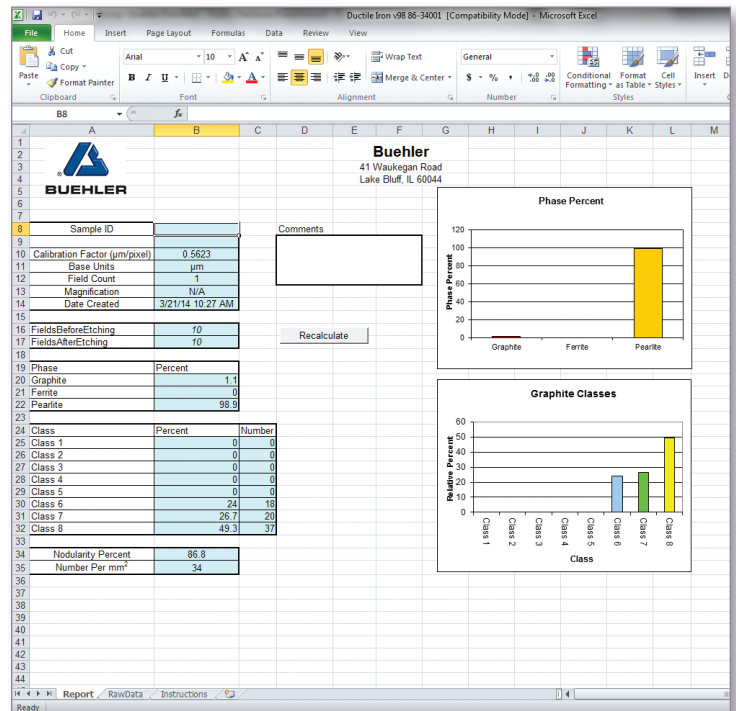
Word



One Click Reporting

Excel

- Export data and results to a Buehler standard report template with one click.
- Templates are user-customizable to adjust the number of images, logo and report title.
- Reports auto populate with the original captured image and the resultant image.
- Relevant graphs display automatically along with the images
- Available sample information completes the report.
- Use Excel interactive to log result data live (while measuring).



† MS Office not included, separate purchase required.



Organize

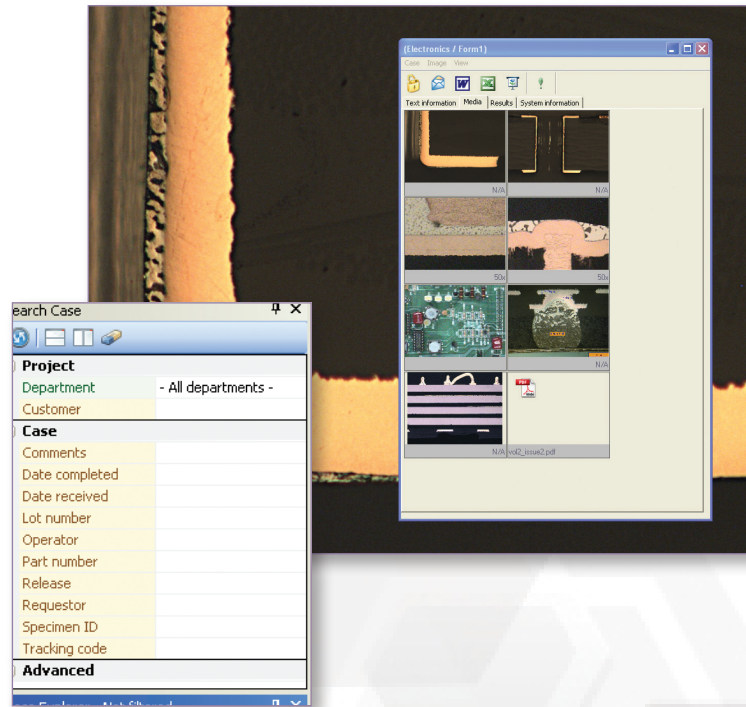
Cases for Organization of Results

Cases

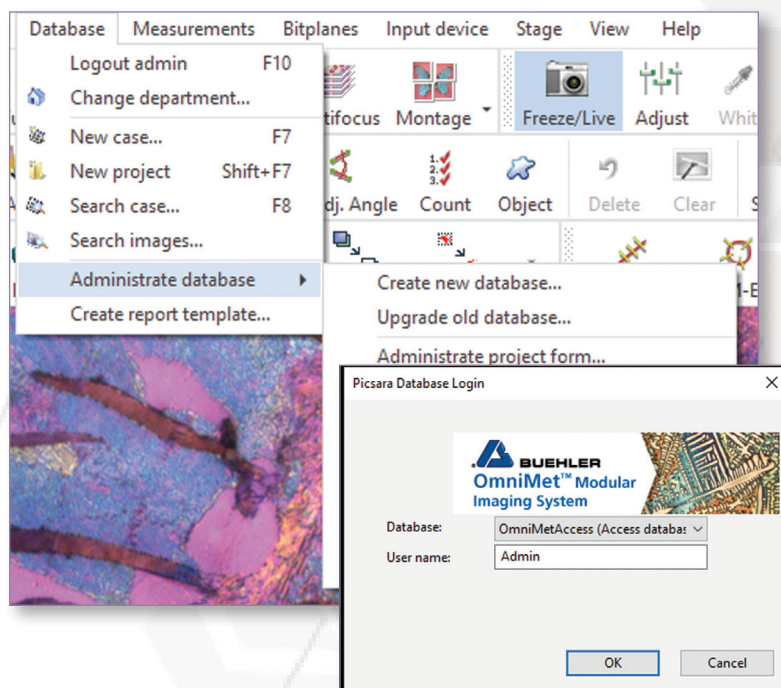
- Organize images, results and reports into user defined cases
- Drag and drop images into case window
- One-click data export to Microsoft Word or Excel†
- Control access with multiple user accounts

Project Management

- Search case by any field
- Fully customizable text fields
- Database structure may be customized to suit laboratory organization.
- Measurement and analysis data retained with images for traceability and recordkeeping.



Database for Networking Workstations



Database Administration

- Create a new database using either Microsoft® Access† or SQL
- Establish database as local or server based
- Upgrade existing databases to be compatible with OmniMet® version updates

Database Login

- Open an established database from an easy drop-down menu
- Implement password protection and multiple user accounts

† MS Office not included, separate purchase required.

Ordering Information

OmniMet® Systems & Software Packages

OmniMet Modular Digital Imaging Solutions

- Flexible platform with preconfigured software or hardware packages
- Optional Capture and Measurement Modules available to customize software solution
- Systems include software pre-installed on a Windows 11 64-bit workstation



Systems*	Software**	Editions
86-1-1001	86-1-1000	OmniMet Viewer - allows networked users to view images and measurements completed on an OmniMet imaging system on the same network.
	86-1-1010	OmniMet Capture N' Measure (CnM) - enables image capture with basic measurement functions without database functions. Measuring functions included are length, parallel lines, curves, area + perimeter, radius, angle and count. Results can be burnt into the image but cannot be stored or exported.
86-1-1003	86-1-1002	OmniMet Basic - offers imaging system calibration, image capture, manual measurements, database for archiving, and MS Office† report templates for presenting results. Measurements include lengths, width, area, curve length, radius, angles, text annotations, and scalebars. Optional Capture Modules may be added for specific applications.
86-1-1005	86-1-1004	OmniMet Advanced - offers all the features of OmniMet Basic, plus enhanced measurement tools and live export of measurement results through Excel† interactive mode. Optional Capture and Measurement modules may be added.
86-1-1007	86-1-1006	OmniMet Express - offers all the features of OmniMet Advanced, plus the ability to run automated analysis Scripts. Optional Capture and Measurement modules, as well as application-specific Scripts, may be added.
86-1-1009	86-1-1008	OmniMet Enterprise - offers all the features of OmniMet Express, plus the ScriptEditor to allow the user to write fully customizable automated Scripts for complete control of customized image analysis. Optional Capture and Measurement modules, as well as application-specific Scripts, may be added.

* System packages include software pre-installed on a Windows 11 64-bit workstation with 24-in monitor, keyboard, mouse, and mousepad.

** Software Only packages include software and mousepad. Computer hardware and monitor not included.

† MS Office not included, separate purchase required.

Upgrades and Updates

Existing customers with OmniMet v10 or later may update their system to the latest version. Lower level OmniMet packages may also be upgraded to higher levels for increased functionality. Customer license number and site ID must be included with purchase order.

Upgrade OmniMet to a higher functional level
(includes update to latest version)

Upgrade From / To	Basic	Advanced	Express	Enterprise
Capture N' Measure	86-5006	86-4006	86-3006	86-1006
Capture Basic	x	86-4002	86-3002	86-1002
Capture Advanced	x	x	86-3004	86-1004
Express	x	x	x	86-1003

Update OmniMet to the latest version

Part Number	Description
86-4202	Update Basic
86-4204	Update Advanced
86-4205	Update Viewer
86-4206	Update Capture N' Measure
86-4201	Update Express
86-4203	Update Enterprise



OmniMet® Software Modules & Features

Software Description	Viewer	CnM	Basic	Advanced	Express	Enterprise
Capture						
Load and Save	•	•	•	•	•	•
Brightness, Auto-White Balance, Color Correction	•	•	•	•	•	•
Digital Zoom, Rotate, Calibration & Annotation	•	•	•	•	•	•
Camera Interface (USB, IEEE 1394, etc.)		•	•	•	•	•
Motorized Stage Controller			•	•	•	•
Capture Modules (optional)	◊	◊	◊	◊	◊	◊
Measure						
Standard Modules: Length, Area, Radius, Count, Parallel Lines	•	•	•	•	•	•
Advanced Modules: 3-point Circle, Adj. Angle, Polygon				•	•	•
Advanced Measurement Modules (optional)				◊	◊	◊
Color Threshold (size, intensity), 16 Bitplanes					•	•
Automation Capable: Read & Run Scripts					•	•
ScriptEditor: Read, Run, Write, and Edit Scripts						•
Application Specific Scripts (optional)					◊	◊*
Report						
Report Data, Report Generator (requires MS Office†)	•		•	•	•	•
Live recording of measurement results in Excel† interactive mode				•	•	•
Organize						
Database Interface	•		•	•	•	•
Database Creation & Administration			•	•	•	•

• Included with package

◊ Optional module (purchased separately)

* OmniMet Enterprise comes with a selection of Scripts.

† MS Office not included, separate purchase required.

Optional Modules

Capture Modules (Add-on for any level)

- 86-4130 OmniMet Multi-Focal Images Used to create focused images from multiple images of the same specimen when the viewing surface exists in different focal planes. Beneficial for removing edge rounding or viewing rougher surfaces when sharply focused images are required for analysis.
- 86-4140 OmniMet Mosaic Multiple Image Stitching Used to stitch multiple images together to create one large, calibrated stitched image. Measurements are possible on the stitched image. Useful for documenting features larger than one field of view. A motorized stage is not required.

Measurement Modules (Add-on for Advanced, Express, Enterprise)

- 86-4110 OmniMet Object Analysis 'Single phase' image analysis for measurements of image features and field characteristics: Area Fraction, Area Position, Number of Objects, Perimeter, Compactness, Length, Feret Diameter, Center of Gravity, Inclusion and Exclusion of Objects by Size.
- 86-4115 OmniMet Weld Measurement Tools for determining weld characteristics. Use a circle radius to determine effective weld depth, angular A-measurements, or full weld outline characterization to determine effective depth, penetration and area.
- 86-4120 OmniMet Hardness Measure Vickers and Knoop indentations interactively, quickly, and easily. Allows load force in gf or kgf and delivers accurate HV/HK values along with the diagonal indent dimensions.
- 86-4125 OmniMet Grain Size Measure grain size interactively using ASTM-E112 methodology with linear intercept or circle intercept methods.

Application Specific Scripts (Optional for Express or Enterprise only)

86-3050*	Manual Interactive Thickness Measurements of line lengths with statistics for length and thickness measurements.	86-3150	Intercept Grain Size Automated grain size determination delivering average grain size per field using straight line and circular intercept methods in accordance with ASTM E112.
86-3100*	Grain Size Automated grain size measurements in accordance with ASTM E112. Average grain size by intercept methods and grain size distributions using areas are delivered. Additional processing identifies ALA grain size and duplex populations in accordance to ASTM E930 and ASTM E1181 where appropriate. ISO 643 compliant.	86-3310	Surface Roughness Surface roughness measurements in accordance with ASME B46.1-02
86-3300*	Coating Layer Thickness Measures coating, plating or layer thickness of cross-sectioned samples in compliance with ASTM B487.	86-3350	Decarburization Depth Assessment Determines depth of total or partial decarburization according to the relative amount of free ferrite present according to ASTM E1077.
86-3500*	Particle Sizing Detects and measures particles in a field of view providing statistics on quantity and size distribution. Suitable for non-agglomerated particulates, precipitates, and powders.	86-3400	Graphite in Cast Iron Automated analysis of graphite in cast iron in accordance with ASTM A247. Measures size and class count of graphite nodules and area percentages of ferrite graphite and pearlite. For gray iron graphite length is also provided.
86-3550*	Porosity Assessment Provides automated measurements of fine holes or pores in a material.	86-3525	Cleanliness Assessment Provides cleanliness assessment of particles on filter paper meeting the requirements of ISO 4406.
86-3750*	Dendritic Spacing Delivers measurements of lengths between dendrite arms in cast aluminum alloys.	86-3600	Indentation Hardness Provides the capability to measure and analyze Knoop and Vickers indents in accordance with ASTM E384. Reports can be exported in HK, HV, HRC, and HRB scales with graphical displays of the hardness profile.
86-3200*	Phase Area Percent determines phase area and percentage area of multiple phases in accordance with ASTM 562	86-3700	Banding Assessment Determines the degree of microstructural banding in conformance with ASTM E1268. Delivers quantitative information on the degree of orientation, anisotropy index, and mean feature spacing.
		86-3850	Inclusion Rating Determines area percentage, mean free path distances, and average numbers of intercepts for oxide and sulfide stringers in ferrous metals in accordance with ASTM E1245.

* Included with OmniMet® Enterprise

Digital Cameras*

Part Number	Model	Mega pixels	Chip Size	Resolution (w x h)	Frame Rate (fps)	Image Sensor	Interface
86-0501	Alvium U-500c	5.0	0.5 in	2592 x 1944	68	CMOS	USB3.1

Computer Hardware*

Part Number	Description
86-0135	LED Monitor, 24 in, Full HD 1080p @ 60 Hz
86-10007	Dell CTO XE4 system (includes CPU i7-12700, 512GB SSD, 16GB RAM, 24-in LED Monitor, keyboard, mouse and mousepad)

* Digital Camera and Computer specifications subject to change, contact Buehler for latest information.



BUEHLER Worldwide Headquarters
North America-South America Offices
 41 Waukegan Road
 Lake Bluff, Illinois 60044-1699 USA
 P: 800 BUEHLER (800-283-4537)
 P: (847) 295-6500
www.buehler.com | info@buehler.com

European Headquarters
BUEHLER Germany
info.eu@buehler.com
BUEHLER France
info.eu@buehler.com
BUEHLER United Kingdom
info.eu@buehler.com

BUEHLER China
info.cn@buehler.com
BUEHLER Japan
info.japan@buehler.com
BUEHLER Asia-Pacific
info.asia@buehler.com